



## *Activities*

---

A few of the fun things available at the lodge include: Volleyball Net, Horseshoes, Croquet, Ping pong, Peddle Boats, Canoe, Games/puzzles, Fishing (License Required, Bring your own gear).

Close by you'll find hiking or biking trails, boating, horseback riding, antique stores & more

For information on Pinetop/Lakeside Area visit [www.pinetoplakesidechamber.com](http://www.pinetoplakesidechamber.com)

Winter months bring snow and a short drive to Sunrise Ski Park, 35 miles away. For more information about Sunrise visit [www.sunriseskiparkaz.com](http://www.sunriseskiparkaz.com)

## *Dining*

---

There are two dining areas in the Lodge and picnic tables outside on the patio.

The Lodge Kitchen provides crock pots, coffeepots, waffle irons, pots and pans, stacks of dishes and drawers of silverware. You will want to bring any spices or flavorings that you might need for your meal preparation.

There's also a gas grill on the patio.

## *Rooming*

---

The great room has a fireplace (wood furnished) WiFi, TV, Cable, DVD/VCR and lots of room to sit, relax and look out towards the lake. It is a great place for a group gathering or meeting.

The Lodge houses 5 bedrooms and four baths. One king, two queens & 4 singles provides sleeping for 10.

## *The Guesthouse*

---

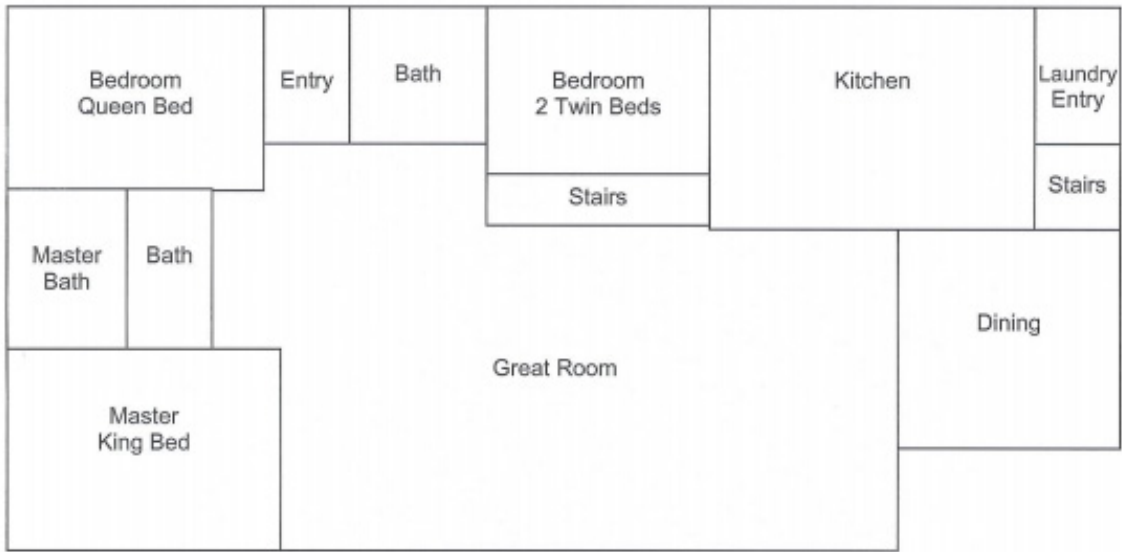
The Guesthouse is just steps away from the main Lodge.

Six guesthouse rooms offer queen beds and private baths, providing accommodations for an additional 12 people.

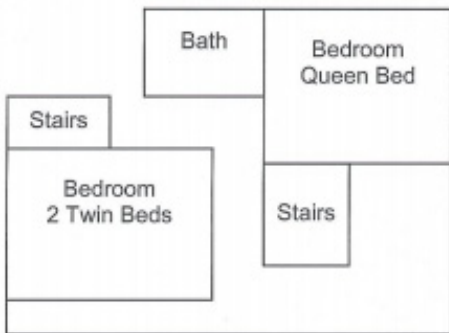


*Rough Sketch of Lodge and Guesthouse Not to Scale*

**Lodge**



**Upstairs Lodge**



**Guesthouse**

